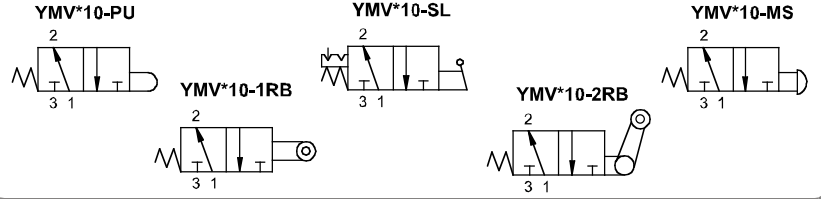


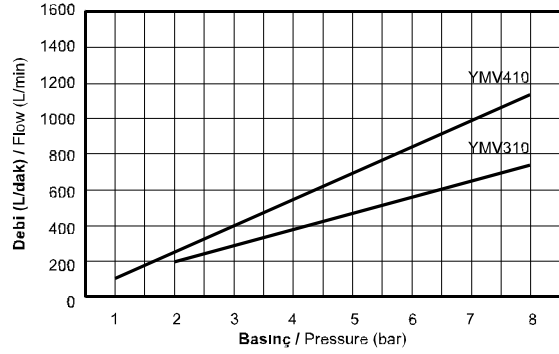
## YMV Serisi Buton & Makaralı Valfler ( 3/2 ) / YMV Series Button & Roller Valves ( 3/2 )



### Sembol / Symbol



### Akış Diyagramı / Flow Chart



### Özellikler / Specification

Model / Model	YMV310	YMV410
Akışkan / Fluid	40µ filtrelenmiş hava / Air ( to be filtered by 40µ filter element )	
Çalışma Tipi / Operating	3/2	
Bağlantı Ölçüsü / Port Size	1/8"	1/4"
Basınç Aralığı / Pressure Range	0~8.0 bar / 0~0.8MPa / 0~114Psi	
Kesit Alan / Sectional Area ( mm <sup>2</sup> )	10.5	16.0
Sıcaklık / Temperature	5 ~ 60°C	
Yağlama / Lubrication	Gerektirmez / Not Required ( ISO VG32 )	

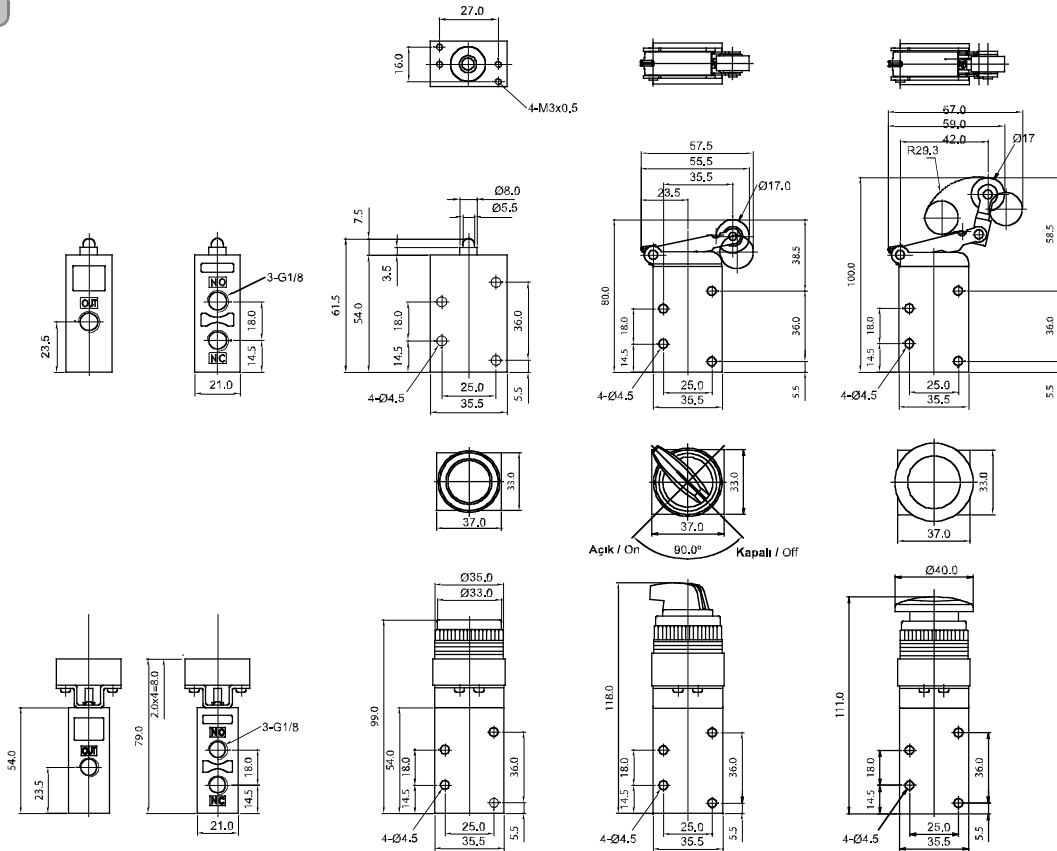
### Sipariş Kodu / Ordering Code

YMV3	1	0	FP	3
Model Model	Fonksiyon Function	Diş Tipi Thread Type	Anahtar Tipi Switch Type	Montaj Deliği Mounting Holes
YMV3: 1/8" Bağlantı Deliği Port  YMV4: 1/4" Bağlantı Deliği Port	1: 3/2 Yay Dönüslü 3/2 Spring Return	0: G	PU: Pimli / Pushrod 1RP: Plastik Makaralı / Two-Way Plastic Roller Lever 1RB: Rulman Makaralı / Two-Way Bearing Roller Lever 2RP: Mafsallı Plastik Makaralı / One-Way Plastic Roller Lever 2RB: Mafsallı Rulman Makaralı / One-Way Bearing Roller Lever FP: Gömme Buton / Flush, Push Button SL: Konum Değiştiricili / Selector MS: Yay Dönüslü Mantar / Spring Return Mushroom MT: Kilitli Mantar / Turn to Unlock Mushroom	3: 30 mm

# YMV Serisi Buton & Makaralı Valfler ( 3/2 ) / YMV Series Button & Roller Valves ( 3/2 )

## Teknik Çizimler / Technical Drawings

### YMV310



### YMV410

