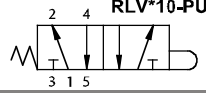
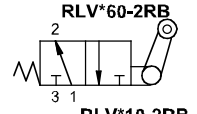
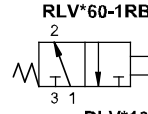
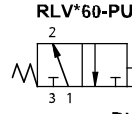


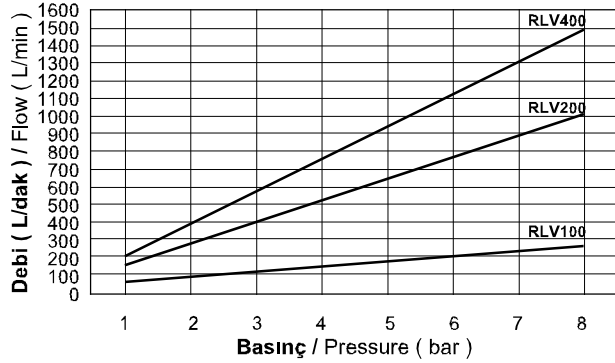
RLV Serisi Makaralı Valfler (3/2 - 5/2) / RLV Series Roller Valves (3/2 - 5/2)



Sembol / Symbol



Akış Diyagramı / Flow Chart



Özellikler / Specification

Model / Model	RLV100	RLV200	RLV400
Akışkan / Fluid	40µ filtrelenmiş hava / Air (to be filtered by 40µ filter element)		
Çalışma Tipi / Operating	5/2, 3/2		
Bağlantı Ölçüsü / Port Size	M5	1/8"	1/4"
Basınç Aralığı / Pressure Range	0~8.0 bar / 0~0.8MPa / 0~114Psi		
Kesit Alan / Sectional Area (mm ²)	3.5	12.6	19.0
Sıcaklık / Temperature	5 ~ 60°C		
Yağlama / Lubrication	Gerektirmez / Not Required (ISO VG32)		

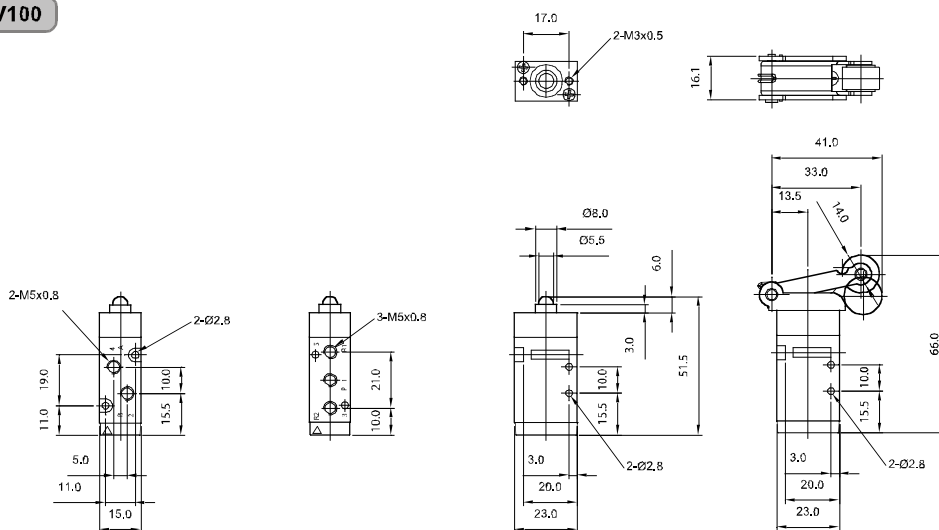
Sipariş Kodu / Ordering Code

RLV1	1	0	PU
Model Model	Fonksiyon Function	Diş Tipi Thread Type	Anahtar Tipi Switch Type
RLV1: M5 x 0.8 Bağlantı Deliği Port	1: 5/2 Yay Dönüslü 5/2 Spring Return	0: G	PU: Pimli / Pushrod
RLV2: 1/8" Bağlantı Deliği Port	6: 3/2 Yay Dönüslü 3/2 Spring Return		1RP: Plastik Makaralı / Two-Way Plastic Roller Lever
RLV4: 1/4" Bağlantı Deliği Port			1RB: Rulman Makaralı / Two-Way Bearing Roller Lever
			2RP: Mafsallı Plastik Makaralı / One-Way Plastic Roller Lever
			2RB: Mafsallı Rulman Makaralı / One-Way Bearing Roller Lever

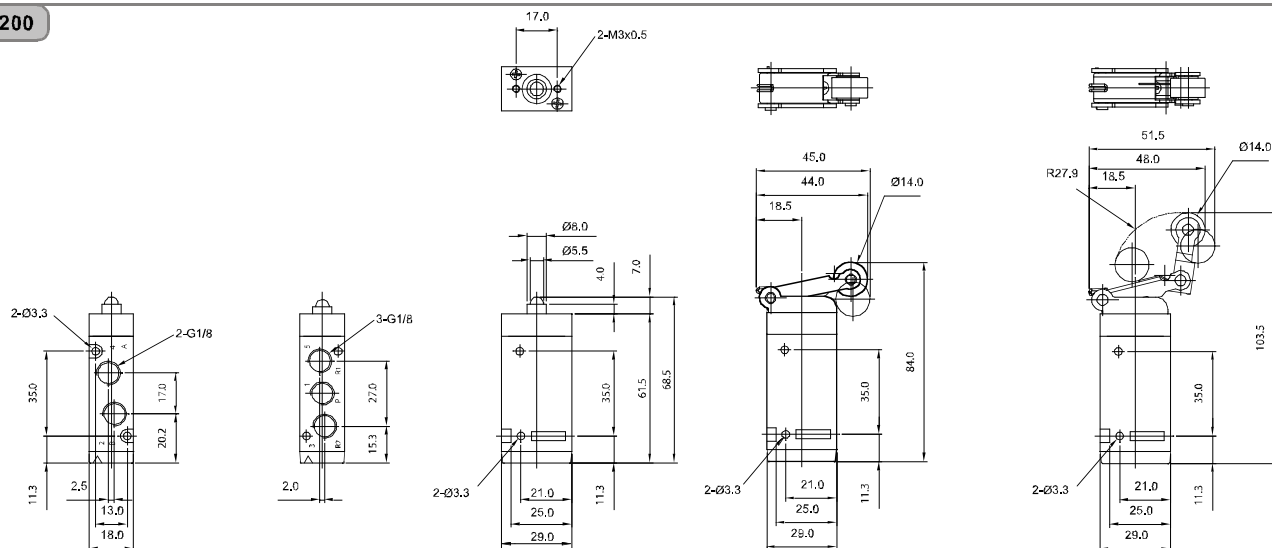
RLV Serisi Makaralı Valfler (3/2 - 5/2) / RLV Series Roller Valves (3/2 - 5/2)

Teknik Çizimler / Technical Drawings

RLV100



RLV200



RLV400

