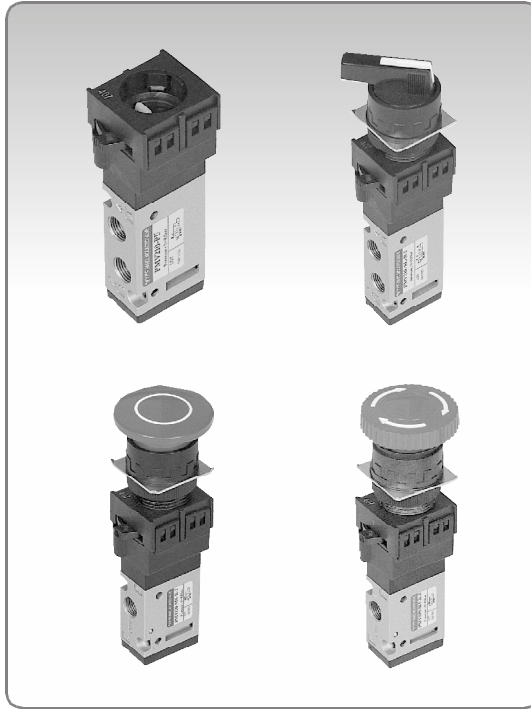
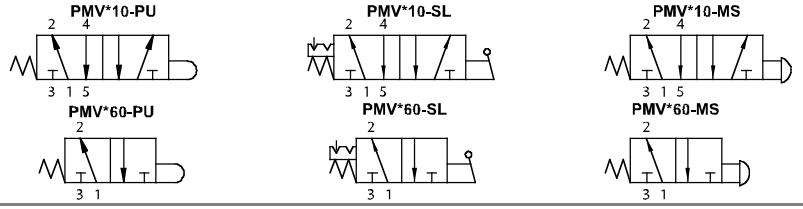


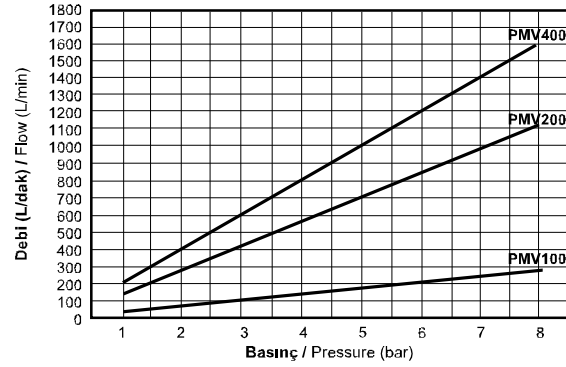
PMV Serisi Buton Valfler (5/2 - 3/2) / PMV Series Button Valves (5/2 - 3/2)



Sembol / Symbol



Akış Diyagramı / Flow Chart



Özellikler / Specification

Model / Model	PMV100	PMV200	PMV400
Akışkan / Fluid	40µ filtrelenmiş hava / Air (to be filtered by 40µ filter element)		
Çalışma Tipi / Operating	5/2, 3/2		
Bağlantı Ölçüsü / Port Size	M5	1/8"	1/4"
Basınç Aralığı / Pressure Range	0~8.0 bar / 0~0.8MPa / 0~114Psi		
Kesit Alan / Sectional Area (mm ²)	3.5	12.6	19.0
Sıcaklık / Temperature	-5 ~ 60°C		
Yağlama / Lubrication	Gerektirmez / Not Required (ISO VG32)		

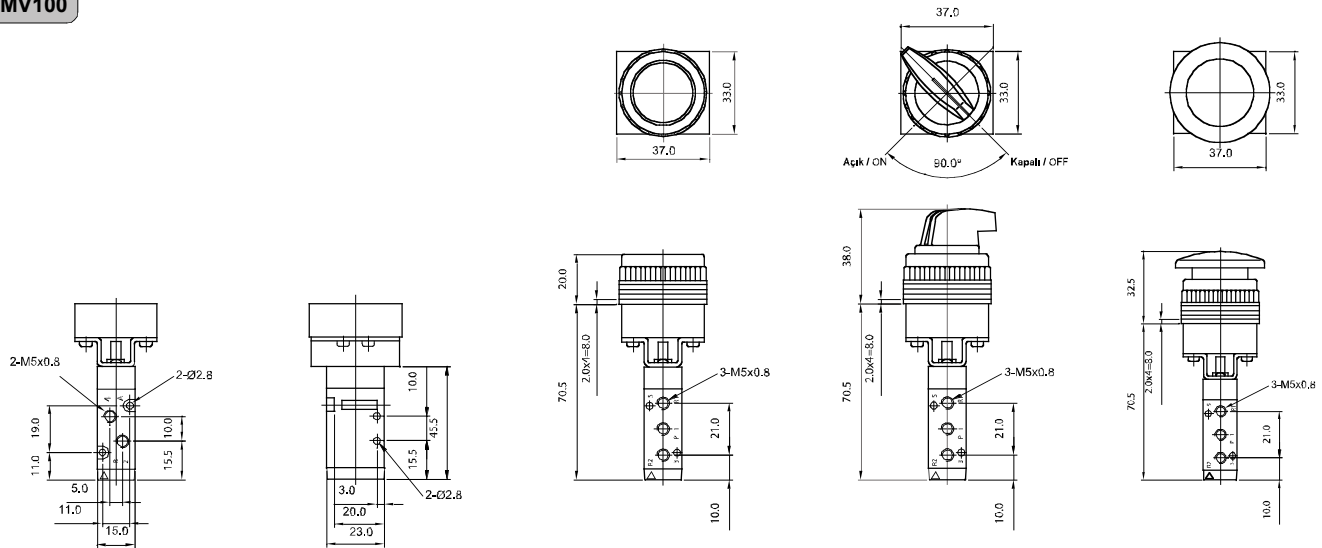
Sipariş Kodu / Ordering Code

PMV1	1	0	FP	R	1
Model Model	Fonksiyon Function	Diş Tipi Thread Type	Anahtar Tipi Switch Type	Buton Rengi Button Color	Montaj Deliği Mounting Holes
PMV1: M5 x 0.8 Bağlantı Deliği Port	1: 5/2 Yay Dönüşlü 5/2 Spring Return 6: 3/2 Yay Dönüşlü 3/2 Spring Return	0: G	0: Yok / None PU: Pimli / Pushrod FP: Gömme Buton Flush, Push Button SL: Konum Değiştiricili Selector MS: Yay Dönüşlü Mantar Spring Return Mushroom MT: Kilitli Mantar Turn to Unlock Mushroom	0: Yok / None B: Siyah / Black R: Kırmızı / Red G: Yeşil / Green Y: Sarı / Yellow	0: Yok / None 1: 22 mm 2: 25 mm 3: 30 mm
PMV2: 1/8"					
PMV4: 1/4"					

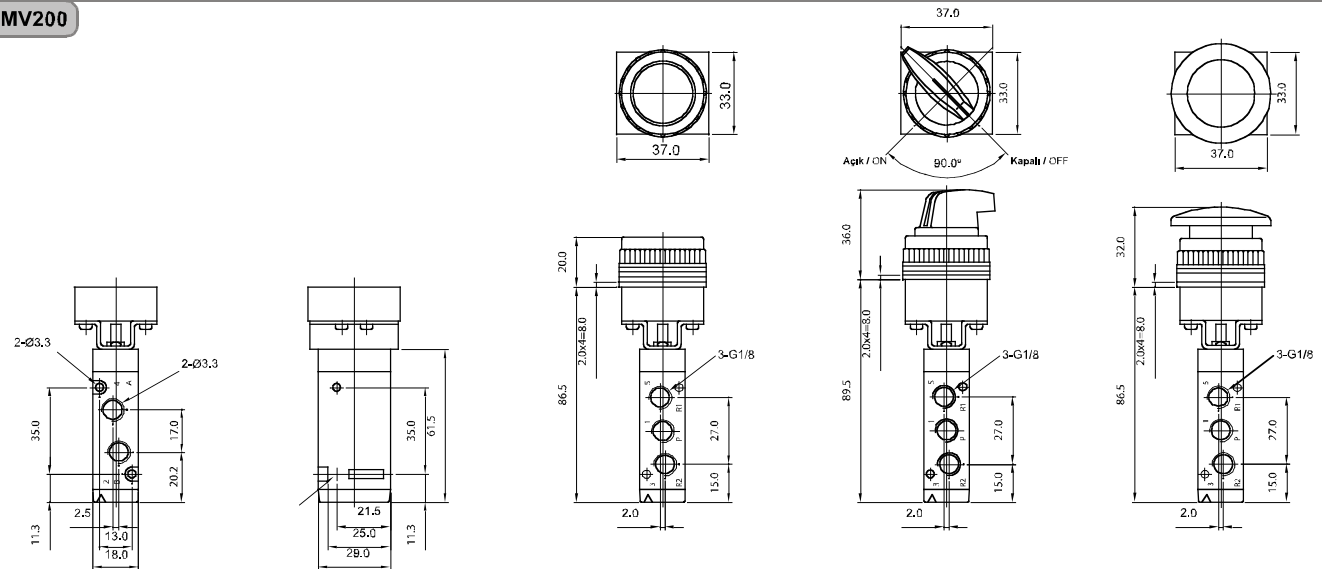
PMV Serisi Buton Valfler (5/2 - 3/2) / PMV Series Button Valves (5/2 - 3/2)

Teknik Çizimler / Technical Drawings

PMV100



PMV200



PMV400

