

## MODÜLER KISMA VALFLERİ MODULAR THROTTLE VALVES MT - 02

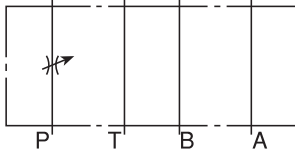


### TEKNİK ÖZELLİKLER / TECHNICAL DATA

MAKSİMUM ÇALIŞMA BASINCI  
MAX. OPERATING PRESSURE:  
250 KGF/CM<sup>2</sup> (3600 PSI)

MAKSİMUM DEBİ / MAX. FLOW:  
40 LPM (10.6 GPM)

### SEMBOLLER / SYMBOLS



### DÜŞÜNCELER / REMARKS

\* AKIŞ AYARLANIRKEN, AKIŞI AZALTMAK İÇİN SAAT YÖNÜNDE, ARTTIRMAK İÇİN SAAT YÖNÜNÜN TERSİNE ÇEVİRİNİZ.  
\* WHEN ADJUST FLOW, USE CLOCKWISE TURN TO DECREASE THE FLOW AND USE COUNTER CLOCKWISE TURN TO INCREASE THE FLOW.

### SİPARİŞ KODU / ORDERING CODE

MT -- 02 -- P -- 50

DİZAYN NUMARASI / DESIGN NUMBER

İŞ YAPACAK DELİKLER / FUNCTION PORT

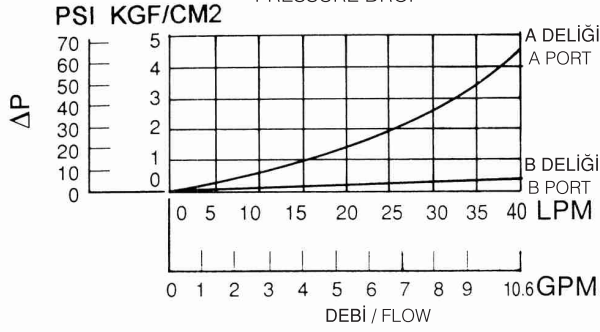
P: P DELİĞİ / P PORT

T: T DELİĞİ / T PORT

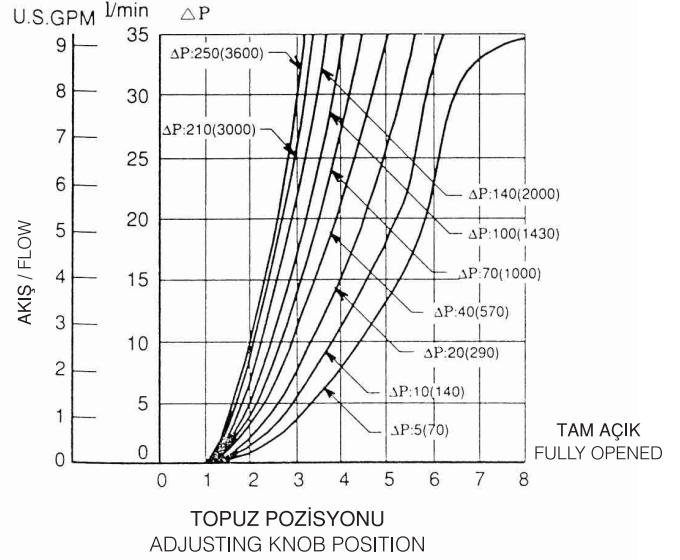
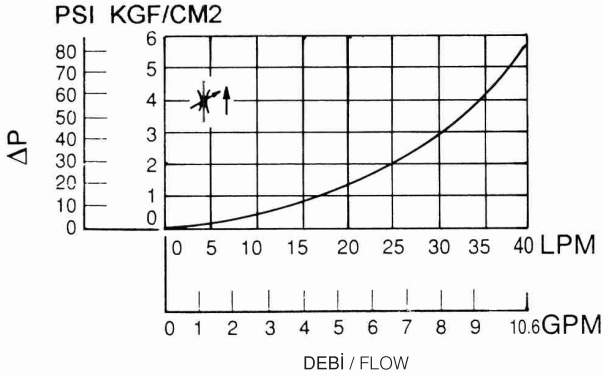
DELİK ÖLÇÜSÜ / PORT SIZE

02: 1/4"

KISMA VALFLERİ  
THROTTLE VALVES

**MT-02 SERİLERİ / MT-02 SERIES****ÇALIŞMA EĞRİLERİ / PERFORMANCE CURVES****MT - 02 P/T**BASINÇ DÜŞÜŞÜ  
PRESSURE DROP

YAĞ ÇALIŞMA ÖLÇÜSÜ / MEASURED AT V= 35 CST AND T= 50°C

KISMA VALFİ TAM AÇIK DURUMDAYKEN BASINÇ DÜŞÜŞÜ  
PRESSURE DROP AT THROTTLE FULLY OPENED**ÖLÇÜLER / DIMENSIONS****MT - 02 P/T**BİRİM / UNIT: MM (INCH)  
AĞIRLIK / WEIGHT: 1.1 KGS