

MODÜLER BASINÇ SIRALAMA VALFLERİ

MODULAR SEQUENCE VALVES

MS - 02



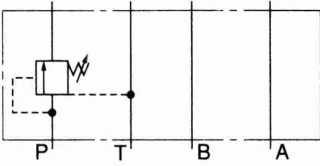
TEKNİK ÖZELLİKLER / TECHNICAL DATA

MAKSİMUM ÇALIŞMA BASINCI
MAX. OPERATING PRESSURE:
250 KGF/CM² (3600 PSI)

MAKSİMUM DEBİ / MAX. FLOW:
40 LPM (10.6 GPM)

AĞIRLIK / WEIGHT:
1.25 KGS

SEMBOLLER / SYMBOLS



SİPARİŞ KODU / ORDERING CODE

MS -- 02 -- P -- K -- 1 -- 50

DİZAYN NUMARASI / DESIGN NUMBER

BASINÇ AYAR ARALIKLARI / PRESSURE ADJUSTING RANGE

1: 8-70 KGF/CM² (120-1000 PSI)

2: 35-140 KGF/CM² (500-2000 PSI)

3: 70-210 KGF/CM² (1000-3000)

BASINÇ AYARLAYICI KOL TİPİ / ADJUSTING ARM TYPE:

K: EL TOPUZLU İLE / WITH HAND KNOB

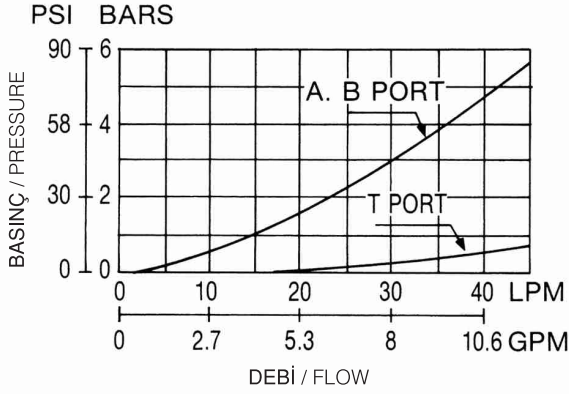
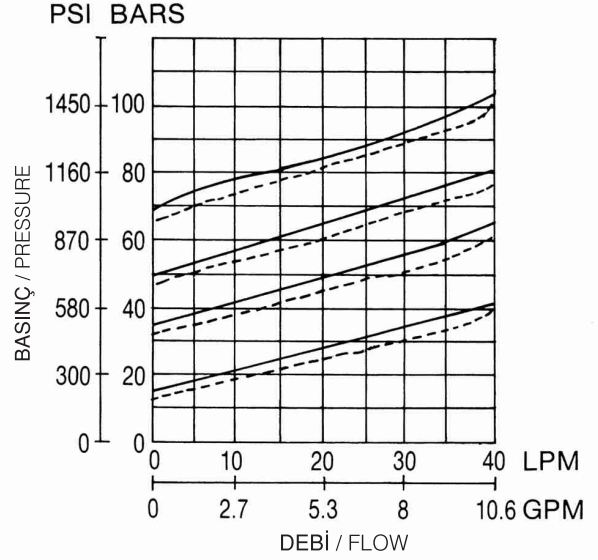
KOD YOKSA - ALLEN AYARLI / NO CODE- WITHOUT HAND KNOB:

İŞ YAPACAK DELİKLER / FUNCTION PORT

P: P DELİĞİ / P PORT

DELİK ÖLÇÜSÜ / PORT SIZE

02: 1/4"

MS - 02 SERİLERİ / MS - 02 SERIES**ÇALIŞMA EĞRİLERİ / PERFORMANCE CURVES**YAĞ ÇALIŞMA ÖLÇÜSÜ V= 35 CST VE T= 50°C
MEASURAD AT V= 35 CST VE T= 50°C**MS - 02P****BASINÇ DÜŞÜŞÜ
PRESSURE DROP****MS - 02P - 1****NOMINAL OVERRIDE CHARACTERISTICS**— BASINÇ ARTTIĞI ZAMAN / WHEN PRESSURE UP
— BASINÇ DÜŞTÜĞÜ ZAMAN / WHEN PRESSURE DROP**ÖLÇÜLER / DIMENSIONS****MS - 02P**

BİRİM / UNIT: MM(INCH)

