

## MODÜLER BASINÇ DÜŞÜRÜCÜ VALFLER MODULAR PRESSURE REDUCING VALVES MPR - 03

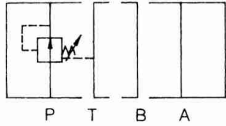


### TEKNİK ÖZELLİKLER / TECHNICAL DATA

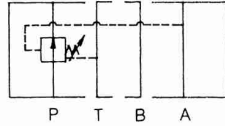
**MAKSİMUM ÇALIŞMA BASINCI**  
MAX. OPERATING PRESSURE:  
250 KGF/CM<sup>2</sup> (3600 PSI)

**MAKSİMUM DEBİ / MAX. FLOW:**  
70 LPM (10.6 GPM)

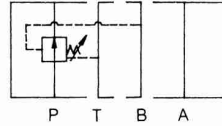
### SEMBOLLER / SYMBOLS



MPR-03P



MPR-03A



MPR-03B

### DÜŞÜNCELER / REMARKS

\* İYİ SONUÇLAR ELDE EDEBİLMEK İÇİN, İLK KISIM ANA DEVRENİN FARK BASINCININ 10 BAR ÜSTÜNDE OLMASINA DİKKAT EDİNİZ.

\* AYAR ARALIĞINDA GÖSTERİLEN MİN. AYAR BASINCI LİMİTİNE DİKKAT EDİNİZ.

\* DEBİYİ AYARLARKEN, DEBİYİ AZALTMAK İÇİN SAAT YÖNÜNDE, ARTTIRMAK İÇİN TERS YÖNDE ÇEVİRİNİZ.

\* TO GET GOOD PRESSURE REDUCING FUNCTION, MAKE SURE DIFFERENTIAL PRESSURE OF FIRST SIDE MAIN CIRCUIT PRESSURE MUST BE ABOVE 10 BARS.

\* BE AWARE OF THE MIN. ADJUSTING PRESSURE LIMITED IN ADJUSTING RANGE.

\* WHEN ADJUST THE FLOW, USE CLOCKWISE TURN TO DECREASE THE FLOW AND USE COUNTER CLOCKWISE TURN TO INCREASE THE FLOW.

### SİPARİŞ KODU / ORDERING CODE

MPR -- 03 -- P -- K -- 1 -- 50

DİZAYN NUMARASI / DESIGN NUMBER

BASINÇ AYAR ARALIKLARI / PRESSURE ADJUSTING RANGE

1: 8-70 KGF/CM<sup>2</sup> (120-1000 PSI)

2: 35-160 KGF/CM<sup>2</sup> (500-2300 PSI)

3: 70-250 KGF/CM<sup>2</sup> (1000-3600 PSI)

BASINÇ AYARLAYICI KOL TİPİ / ADJUSTING ARM TYPE:

K: EL TOPUZLU / WITH HAND KNOB

KOD YOKSA / NO CODE: ALLEN AYARLI / WITHOUT HAND KNOB

İŞ YAPACAK DELİKLER / FUNCTION PORT:

P: P DELİĞİ / P PORT

A: A DELİĞİ / A PORT

B: B DELİĞİ / B PORT

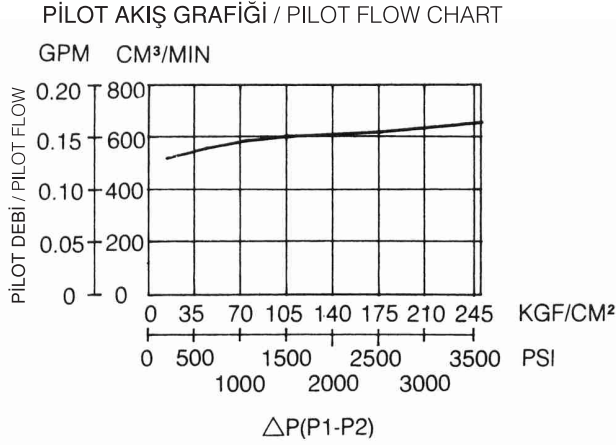
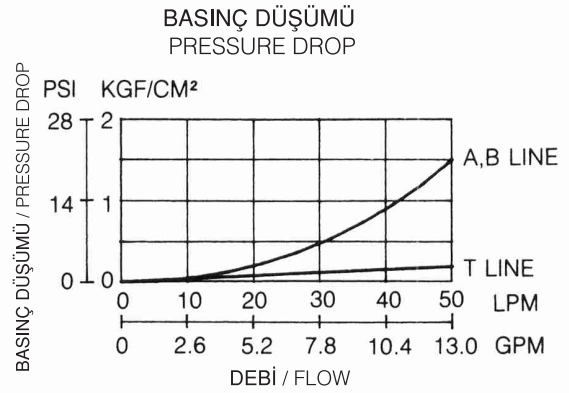
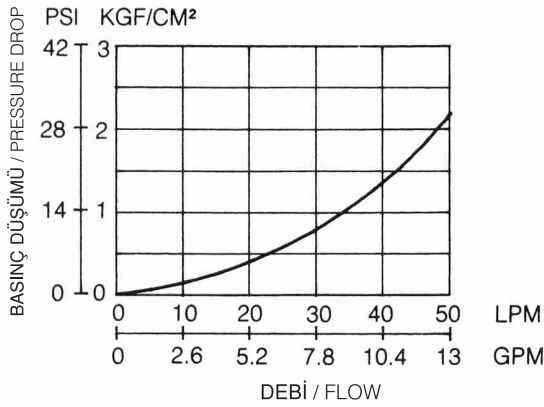
DELİK ÖLÇÜSÜ / PORT SIZE

03: 3/8"

## MPR - 03 SERİLERİ / MPR - 03 SERIES

## PERFORMANS EĞRİLERİ / PERFORMANCE CURVES

YAĞ ÇALIŞMA ÖLÇÜSÜ / MEASURED AT V= 35 CST AND T= 50 °C

SPUL TAM AÇIKKEN BASINÇ DÜŞÜMÜ (P HATTI)  
PRESSURE DROP AT SPOOL FULLY OPENED (P LINE)

## ÖLÇÜLER / DIMENSIONS

