

## MODÜLER BASINÇ DÜŞÜRÜCÜ VALFLER MODULAR PRESSURE REDUCING VALVES MPR - 02

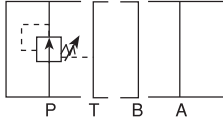


### TEKNİK ÖZELLİKLER / TECHNICAL DATA

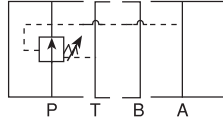
MAKSİMUM ÇALIŞMA BASINCI / MAX. OPERATING PRESSURE  
250 KGF/CM<sup>2</sup> (3600 PSI)

MAKSİMUM AKIŞ / MAX. FLOW  
40 LPM (10.6 GPM)

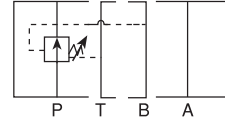
### SEMBOLLER / SYMBOLS



MR - 02P



MR - 02A



MR - 02B

### DÜŞÜNCELER / REMARKS

- \* İYİ SONUÇ ELDE ETMEK İÇİN, İLK KISIM ANA DEVRENİN FARK BASINCININ 10 BAR ÜSTÜNDE OLMASINA DİKKAT EDİNİZ
- \* AYAR ARALIĞINDA GÖSTERİLEN MIN. AYAR BASINCI LİMİTİNE DİKKAT EDİNİZ.
- \* DEBİYİ AYARLARKEN, DEBİYİ AZALTMAK İÇİN SAAT YÖNÜNDE, ARTTIRMAK İÇİN TERS YÖNDE ÇEVİRİNİZ.

\* TO GET GOOD PRESSURE REDUCING FUNCTION, MAKE SURE DIFFERENTIAL PRESSURE OF FIRST SIDE MAIN CIRCUIT PRESSURE MUST BE ABOVE 10 BARS.

\* BE AWARE OF THE MIN. ADJUSTING PRESSURE LIMITED IN ADJUSTING RANGE.

\* WHEN ADJUST THE FLOW, USE CLOCKWISE TURN TO DECREASE THE FLOW AND USE COUNTER CLOCKWISE TURN TO INCREASE THE FLOW.

### SİPARİŞ KODU / ORDERING CODE

MPR -- 02 -- P -- K -- 1 -- 50

DİZAYN NUMARASI / DESIGN NUMBER

BASINÇ AYAR ARALIKLARI / PRESSURE ADJUSTING RANGE

- 1: 3-35 KGF/CM<sup>2</sup> (45-500 PSI)
- 2: 8-70 KGF/CM<sup>2</sup> (45-500 PSI)
- 3: 35-160 KGF/CM<sup>2</sup> (500-2300)

BASINÇ AYARLAYICI KOL TİPİ / ADJUSTING ARM TYPE

- K: TOPUZLU EL KUMANDA İLE / WITH HAND KNOB
- KOD YOKSA: ALYENLE KUMANDALI / NO CODE: WITHOUT HAND KNOB

İŞ YAPACAK DELİKLER / FUNCTION PORT:

- P: P DELİĞİ / P PORT
- A: A A DELİĞİ / A PORT
- B: B DELİĞİ / B PORT

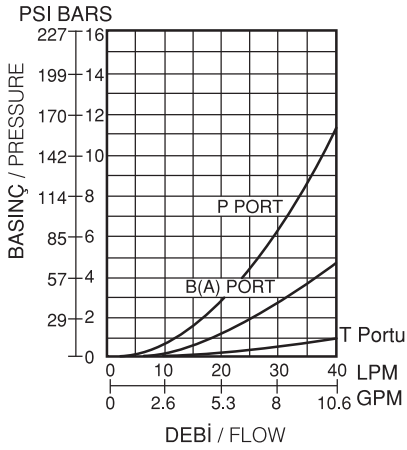
DELİK ÖLÇÜSÜ / PORT SIZE:

- 02: 1/4"

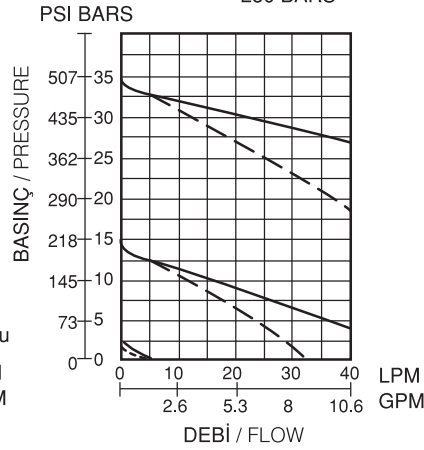
**MPR - 02****ÇALIŞMA EĞRİLERİ / PERFORMANCE CURVES**

YAĞ ÇALIŞMA ÖLÇÜSÜ (MEASURED AT V) V=35 CST AND T=50°

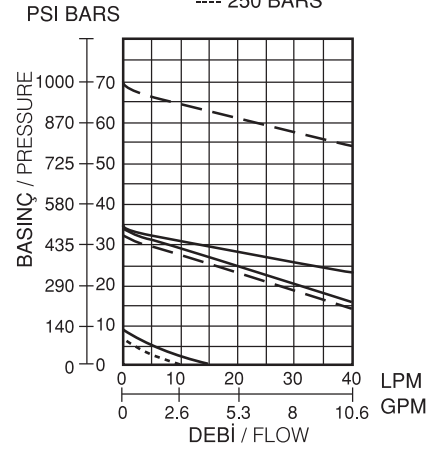
BASINÇ DÜŞÜMÜ DEBİ  
PRESSURE DROP FLOW  
MPR - 02P(A,B)



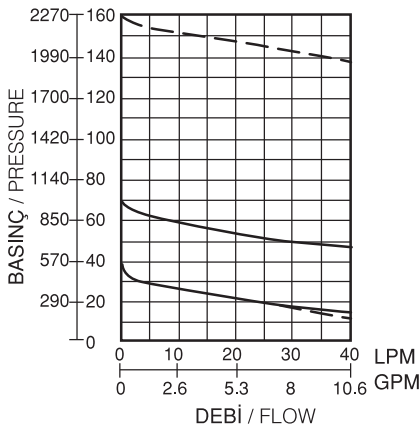
BASINÇ - AKIŞ İLİŞKİSİ  
PRESSURE RELATED TO FLOW  
MPR - 02P - 03  
FIRST PRESSURE — 70 BARS  
---- 250 BARS



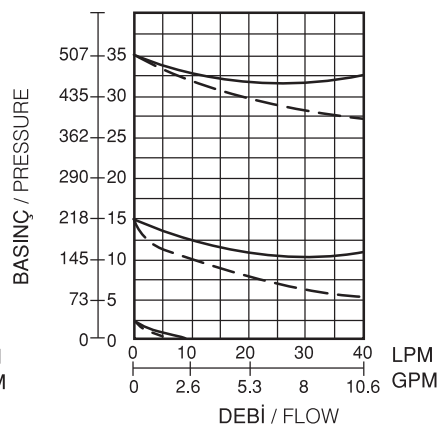
BASINÇ - AKIŞ İLİŞKİSİ  
PRESSURE RELATED TO FLOW  
MPR - 02P - 01  
FIRST PRESSURE — 70 BARS  
---- 250 BARS



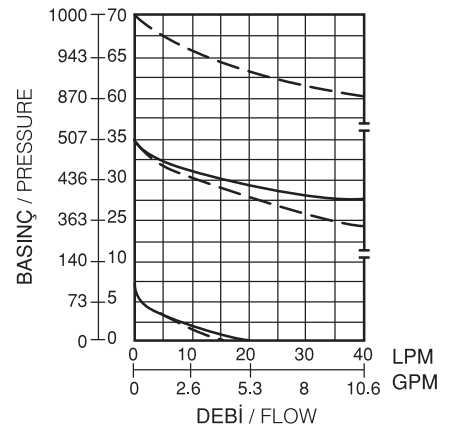
BASINÇ - AKIŞ İLİŞKİSİ  
PRESSURE RELATED TO FLOW  
MPR - 02P - 2  
FIRST PRESSURE — 160 BARS  
PSI BARS ---- 250 BARS



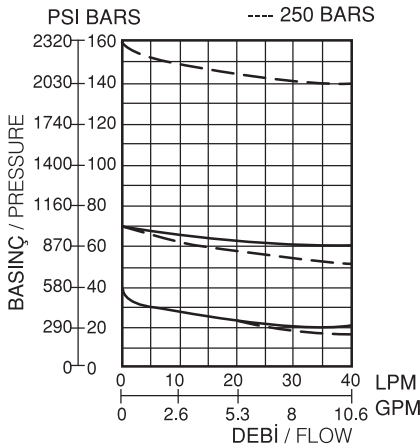
BASINÇ - AKIŞ İLİŞKİSİ  
PRESSURE RELATED TO FLOW  
MPR - 02A(B) - 3  
FIRST PRESSURE — 70 BARS  
PSI BARS ---- 250 BARS



BASINÇ - AKIŞ İLİŞKİSİ  
PRESSURE RELATED TO FLOW  
MPR - 02A(B) - 1  
FIRST PRESSURE — 70 BARS  
PSI BARS ---- 250 BARS



BASINÇ - AKIŞ İLİŞKİSİ  
PRESSURE RELATED TO FLOW  
MPR - 02A(B) - 2  
FIRST PRESSURE — 160 BARS  
PSI BARS ---- 250 BARS



**MPR - 02****ÖLÇÜLER / DIMENSIONS**

BİRİM / UNIT: MM (INCH)  
AĞIRLIK / WEIGHT: 1.3 KGS

