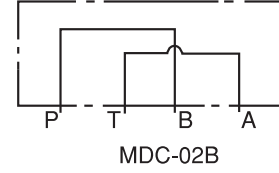


MODÜLER BLOKLAR / MODULAR BLOCKS

MDC - 02



SEMBOLLER / SYMBOLS



TEKNİK BİLGİ / TECHNICAL DATA

MAKSİMUM ÇALIŞMA BASINCI MAX. OPERATING PRESSURE KGF/CM ² (PSI)	MAKSİMUM DEBİ MAX. FLOW LPM/GPM	AĞIRLIK WEIGHT KGS
250 (3600)	40 (10.6)	1.15 KGS

İŞLEVİ / FUNCTION

- * KÖRLEME PLEYTLERİ, PLEYT MONTAJINA YARDIMCI OLUR VE GEREKSİZ DEVRELERİ KAPATIR.
- * BY PASS PLEYTLERİ, SELENOİD YÖN VALFİ GEREKTİRMEYEN TEK YÖNLÜ DEVRELER İÇİN KULLANILIR.
- * THE BLOCKING PLATES HELP PLATE - INSTALLATION AND CLOSE USELESS CIRCUIT.
- * THE BY - PASS PLATES ARE USED FOR SINGLE DIRECTION CIRCUIT WHICH NEED NO SELENOID CONTROLLED DIRECTIONAL VALVES.

SİPARİŞ KODU / ORDERING CODE

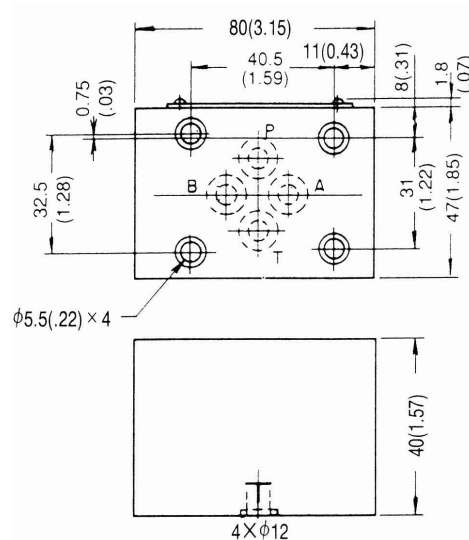
MDC -- 02 -- A -- 50

DİZAYN NUMARASI / DESIGN NUMBER

A: KÖRLEME PLEYTLERİ / BLOCKING PLATES
B: BY - PASS PLEYTLERİ / BY - PASS PLATES

DELİK ÖLÇÜSÜ / PORT SIZE
02. 1/4"

ÖLÇÜLER / DIMENSIONS

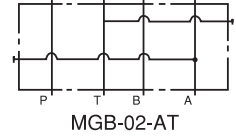
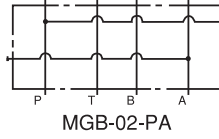


BİRİM / UNITS : MM (INCH)
AĞIRLIK / WEIGHT : 1.15 KGS

MODÜLER BAĞLANTI BLOKLARI/ MODULAR CONNECTING BLOCKS MGB - 02



SEMBOLLER / SYMBOLS



TEKNİK BİLGİ / TECHNICAL DATA

MAKSİMUM ÇALIŞMA BASINCI MAX. OPERATING PRESSURE KGF/CM ² (PSI)	MAKSİMUM DEBİ MAX. FLOW LPM/GPM	AĞIRLIK WEIGHT KGS
250 (3600)	40 (10.6)	1.1 KGS

İŞLEVİ / FUNCTION

* MODÜLER BAĞLANTI BLOKLARINDA HAT BASINCI MANOMETRE BAĞLANMAK SURETİYLE KONTROL EDİLEBİLİR.
* THE MODULAR CONNECTING BLOCKS ARE USED FOR CHECKING THE PORT PRESSURES, CAN BE CONNECTED WITH PRESSURE GAUGES.

SİPARİŞ KODU / ORDERING CODE

MGB -- 02 -- PA -- 50

DİZAYN NUMARASI / DESIGN NUMBER

İŞ YAPACAK DELİKLER / FONCTION PORT:

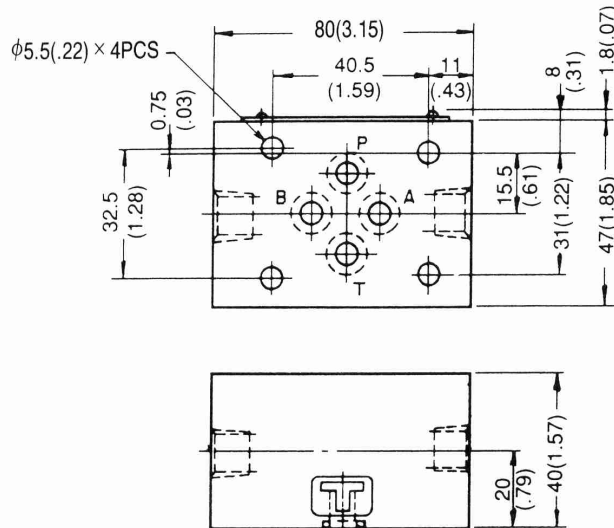
PA: P,A DELİĞİ / P,A PORT

PB: P,B DELİĞİ / P,B PORT

AT: A,T DELİĞİ / A,T PORT

DELİK ÖLÇÜSÜ / PORT SIZE
02: 1/4"

ÖLÇÜLER / DIMENSIONS



BİRİM / UNITS : MM (INCH)
AĞIRLIK / WEIGHT : 1.15 KGS