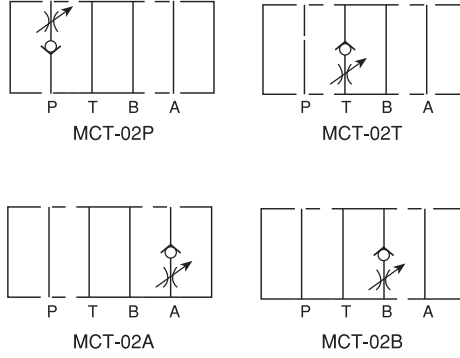


MODÜLER ÇEK VALF VE KISMA VALFLERİ MODULAR CHECK AND THROTTLE VALVES MCT - 02



SEMBOLLER / SYMBOLS



TEKNİK BİLGİ / TECHNICAL DATA

MAKSİMUM ÇALIŞMA BASINCI MAX. OPERATING PRESSURE KGF/CM2 (PSI)	MAKSİMUM DEBİ MAXIMUM FLOW LPM (GPM)	AÇMA BASINCI CRACKING PRESSURE KGF/CM2 (PSI)	AĞIRLIK WEIGHT KGS
250 (3600)	40 (10.6)	0.5 (7) & 3.5 (50)	1.15 KGS

DÜŞÜNCELER / REMARKS

- * DEBİYİ AYARLARKEN, DEBİYİ AZALTMAK İÇİN SAAT YÖNÜNDE, ARTTIRMAK İÇİN SAAT YÖNÜNÜN TERSİNDE ÇEVİRİNİZ.
- * WHEN ADJUST THE FLOW, USE CLOCKWISE TURN TO DECREASE THE FLOW AND USE COUNTER CLOCKWISE TURN TO INCREASE THE FLOW.

SİPARİŞ KODU / ORDERING CODE

MCT -- 02 -- P -- 05 -- 50

DİZAYN NUMARASI / DESIGN NUMBER

AÇMA BASINCI / CRACKING PRESSURE:

05: 0.5 KGF/CM2 (7 PSI)

50: 3.5 KGF/CM2 (50 PSI)

İŞ YAPACAK DELİKLER / FUNCTION PORT

P: P DELİĞİ / P PORT

T: T DELİĞİ / T PORT

A: A DELİĞİ / A PORT

B: B DELİĞİ / B PORT

DELİK ÖLÇÜSÜ / PORT SIZE

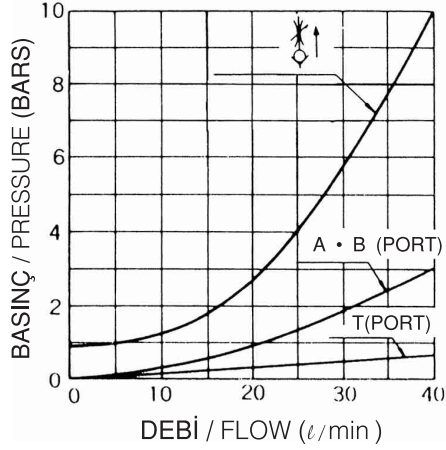
02: 1/4"

ÇEK VE HIZ AYAR VALFLERİ
CHECK AND THROTTLE VALVES

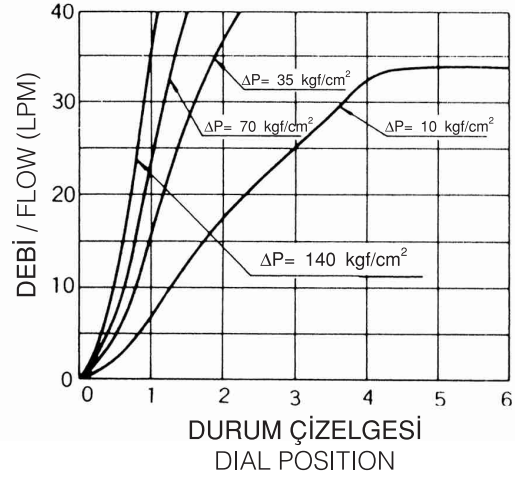
MCT - 02 SERİLERİ / MCT - 02 SERIES**ÇALIŞMA EĞRİLERİ / PERFORMANCE CURVES****MCT**

YAĞ ÇALIŞMA ÖLÇÜSÜ V= 35 CST ve T= 50 °C
MEASURED AT V= 35 CST AND T= 50 °C

HIZ AYAR VALFİ TAM AÇIKKEN BASINÇ DÜŞÜMÜ
PRESSURE DROP AT THROTTLE FULLY OPENED



DEBİ SAYACI VS. DURUM ÇİZELGESİ
METRED FLOW V.S. DIAL POSITION

**ÖLÇÜLER / DIMENSIONS****MCT-02P**

BİRİM / UNIT: MM(INCH)

