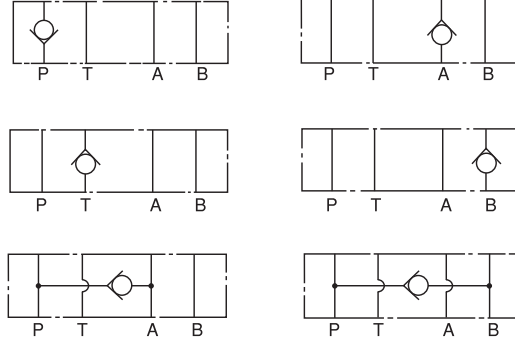


## MODÜLER ÇEKVALFLER / MODULAR CHECK VALVES

### MC -02



#### SEMBOLLER / SYMBOLS



#### TEKNİK BİLGİ / TECHNICAL DATA

MAKSİMUM ÇALIŞMA BASINCI MAX. OPERATING PRESSURE KGF/CM <sup>2</sup> (PSI)	MAKSİMUM DEBİ MAXIMUM FLOW LPM (GPM)	AÇMA BASINCI CRACKING PRESSURE KGF/CM <sup>2</sup> (PSI)	AĞIRLIK WEIGHT KGS
250 (3600)	40 (10.6)	0.5 (7) & 3.5 (50)	1.15 KGS

#### SİPARİŞ KODU / ORDERING CODE

MC -- 02 -- P -- 05 -- 50

DİZAYN NUMARASI / DESIGN NUMBER

AÇMA BASINCI / CRACKING PRESSURE:

05: 0.5 KGF/CM<sup>2</sup> (7 PSI)

50: 3.5 KGF/CM<sup>2</sup> (50 PSI)

İŞ YAPACAK DELİKLER / FUNCTION PORT

P: P DELİĞİ / P PORT

T: T DELİĞİ / T PORT

A: A DELİĞİ / A PORT

B: B DELİĞİ / B PORT

PA: A ->P

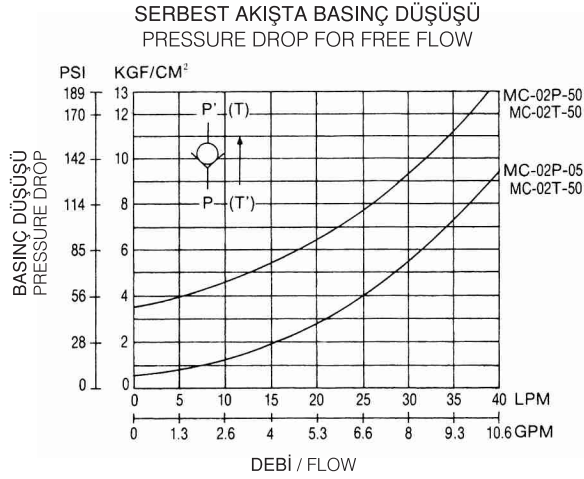
PB: B ->P

DELİK ÖLÇÜSÜ / PORT SIZE

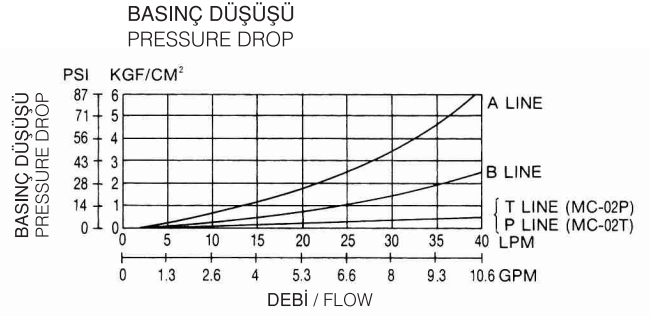
02: 1/4"

ÇEK VALFLER

CHECK VALVES

**MC -02 SERİLERİ / MC - 02 SERIES****ÇALIŞMA EĞRİLERİ / PERFORMANCE CURVES****MC - 02 P, T, A & B**

YAĞ ÇALIŞMA ÖLÇÜSÜ / MEASURED AT V= 35 CST AND T= 50°C

**MC - 02 PA & PB****ÖLÇÜLER / DIMENSIONS****MC - 02P**BİRİM / UNIT: MM(INCH)  
AĞIRLIK / WEIGHT : 1.15 KGS